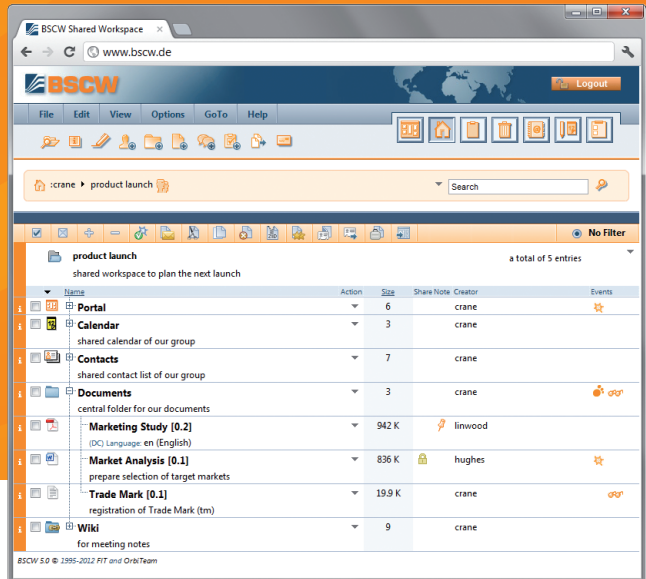


Teamwork made easy

Efficient group collaboration with BSCW



The BSCW shared workspace system is the tool of choice for internal group collaboration with team members and with external partners. BSCW permits the creation of documents, appointments, contacts, tasks and notes within shared workspaces. Team members can access this data around-the-clock, from anywhere in the world. Mission-critical information is constantly available to all authorized personnel regardless of location.



Document management
Professional document management with version control



Task management
Coordination of shared activities – through simple ad hoc workflows



Mobile access
Access to your workspaces from anywhere en route



Workgroups
Self-organized workgroups: fast, simple and flexible



Personal portal
Individually-designed portal pages for workgroups



Desktop integration
Easy browsing and searching directly on your desktop



Shared calendars
Coordination of meetings in group calendars



Polls
Internal voting, public opinion polls and meeting scheduling within a group



Administration
System administration made easy – graphical and command line interfaces



Communication
Discussion forums, blogs and wikis: communication with a capital C.



Project management
Project activities streamlined to keep participants informed



Integration
Seamless integration BSCW into your IT infrastructure



Contact management
Team contact lists – even for individual projects



Awareness
Constantly up-to-date with BSCW

See overleaf for more details or:
www.bscw.de

KEY BENEFITS

FOR USERS

Intuitive user interface for easy access

Flexible, role based access control

Individually configurable, fully web based user interface

Mobile access via smartphone or tablet (e.g. iPhone, iPad or Android)

Multiple language support

Central document storage with version control

Comfortable document upload (incl. drag and drop)

Integration of desktop file browser (via WebDAV)

Direct editing of web and office documents

Offline synchronization of documents

Coordinated access to documents via user defined workflows

Easy knowledge management via integrated Wiki

Group calendars and shared contact lists

Synchronization of contacts and appointments with Microsoft Outlook™

Annotations and ratings to documents

Powerful search mechanisms incl. full text search

Event history and notification, e.g., by daily e-mail report

Indication of online presence of other workspaces members

Archiving of workspaces to standard archive formats, e.g., ZIP

Document distribution to external partners via e-mail

FOR ADMINISTRATORS

Multiple server platforms supported

Easy to install and maintain

Minimal administrative effort

Easy user management, e.g., quota, time-limited user accounts

Web Service API for integration of external applications

Support for LDAP integration, e.g., OpenLDAP or Active Directory

Compatible with different single sign-on providers, e.g., OpenID, CAS, Shibboleth

FOR DECISION-MAKERS

Cost efficient and proven solution

Fast setup of projects without red tape

Simple, versatile and flexible solution for internal and external collaboration

Shared workspaces beyond organizational borders

Inclusion of external partners with no administrative effort

Co-workers easily store and work on documents from any location, at any time

Streamlining of decision processes through polling

Keeping track of activities in shared workspaces through event histories and e-mail reports

Archiving completed projects

Choosing between own server (in-house) and hosting (cloud)

SYSTEM REQUIREMENTS

YOUR OWN IN-HOUSE SERVER

Software:

- Python 2.7
- Apache Web Server 2.4 (UNIX/Windows) or Microsoft Internet Information Server 7/8/10 (Windows)
- SMTP server (UNIX/Windows) or local SMTP server (postfix/sendmail UNIX)

Windows™ operating systems:

- Windows Server 2008/2012/2016

UNIX operating systems:

- Linux (e.g., Debian, Fedora, Ubuntu), BSD

SYSTEM RESOURCES (SERVER):

For approximately 200 users BSCW requires the following server hardware:

- Intel Core/Xeon or AMD A-series/Opteron (> 3.2 GHz) 64bit server system (or any other comparable system)
- 8 GB RAM
- > 500 GB hard disk space (the BSCW installation requires ~200 MB disk space)

CLIENT

- platforms supported: Windows, Linux, Mac
- current web browser with JavaScript (e.g. Internet Explorer 11, Firefox, Chrome or Safari)
- some (optional) features require a Java™ runtime (webstart/plugin)



OrbiTeam Software GmbH & Co. KG
Endenicher Allee 35
53121 Bonn
Germany

phone: +49 228 41014-0
fax: +49 228 41014-10
info@orbiteam.de
www.orbiteam.de



More info and free trial evaluation:
www.bscw.de